

**DEVILBISS**

SB-EE-25-0482 ISS.03

**CE 0194**

**OPERATION MANUAL**  
MPV-628 AIR-FED FACE VIZOR  
STARTER OUTFIT



### Operation Manual MPV-628 AIR-FED FACE VIZOR STARTER OUTFIT

#### Important

*Read and follow all instructions and Safety Precautions before using this equipment*

#### SAFETY WARNINGS

##### **IMPROPER USE IS DANGEROUS. READ INSTRUCTIONS BEFORE USING**

This supplied air respirator is designed to provide a high level of protection in contaminated atmospheres when worn and used correctly. It is not for use in atmospheres immediately dangerous to life or health and if accidentally disconnected or removed the wearer must be able to safely reach clean breathable air supply. The

compressed air supply to the respirator must be of breathable quality and conform to BSEN 12021:1998 and relevant National or local Standards.

##### **THE ACTIVATED CARBON FILTER DOES NOT REMOVE CARBON MONOXIDE OR CARBON DIOXIDE.**

THIS DEVICE IS RECOMMENDED WHEN SPRAYING 2 PACK PAINTS AND PAINTS CONTAINING ISOCYANATES.

#### APPROVAL FOR USE

The MPV supplied air-fed vizor respirator is CE approved under PPE Directive 89/686/EEC.

An MPV supplied air vizor system, correctly fitted and applied by trained personnel in accordance with these instructions, may be used subject to the user determining its suitability, for protection from particles, fumes, gases and vapours. The respirator should only be used with Devilbiss original components to

maintain approval for the system, this includes the compressed air supply hose item 10 (fig1) and hose connectors.

INSPEC International Ltd CE approval (Notified body number 0194) 56 Leslie Hough Way, Salford, M6 6AJ, England, United Kingdom

#### DESCRIPTION

The MPV supplied air Vizor has a lightweight fully adjustable headband. The detachable acetate Vizor has flexible foam face skirt incorporating a diffused compressed air feed tube. The Vizor can be lifted up from the face when the operator is not working in a hazardous area. Two half turn tension knobs adjust the Vizor movement. The vizor air feed tube is connected to its

associated filter/regulator which is attached at the waistbelt. The preset compressed air pressure regulator maintains a constant flow of air to the vizor. Manufacturers minimum design flow rate 140 litres/min (4.9 Ft<sup>3</sup>/min). The disposable activated carbon filter removes odour, oil and vapour. Two disposable vizor covers are also provided.

## SUITABILITY FOR USE

It is the duty of the employer to determine such suitability and in so doing the following factors should be considered bearing in mind that the circumstances of use determine the level of protection provided.

- 1) The respirator must not be used in atmospheres immediately dangerous to life or health; i.e those atmospheres from which it would not be possible to escape without risk to life or health. Such atmospheres include those deficient in oxygen.
- 2) The respirator must not be used in atmosphere where the concentration of contaminant may exceed the allowable exposure limit and it should be noted that at exceptionally high levels of physical work the peak inhalation may exceed the constant flow of supplied air. (See Specification)
- 3) The wearer must be able to adjust and fit the respirator correctly. The wearer

must be trained in the correct wearing and operation of the respirator and understand the limitations of use.

- 4) The employer should ensure that the respirator, which is intended for light duty service, is suitable and that the appropriate model is selected and that the trailing supply hose will not present a hazard to the wearer or others in the vicinity. Refer to - HSG 53. The selection use and maintenance of respiratory protective equipment (HSE Guide).
- 5) The employer must provide a suitable management system, to ensure that the respirator is maintained in accordance with the manufacturers instructions. Refer to - BS4275: 1997 Guide to implementing an effective respiratory protective device programme.

## SPECIFICATION

**Protection- Assigned Protection Factor APF=40**

**Carbon Filter Life = 1000 HRS.**

**NOTE CARBON FILTER HAS A LIMITED SHELF LIFE.**

**Supply pressure - 2.5 bar (36 lbf/in<sup>2</sup>) At hose supply connection (See Fig 1) max 7 bar (100 lbf/in<sup>2</sup>).**

**Supply hose - Only to be used with Devilbiss original hose. The manufacturers flow rate is recommended at a minimum of 140 litres/min (4.9 SCFM) to the mask. See parts list for recommended supply hose.**

**MPV-628** Air Fed Vizor Outfit comprises of:

Vizor Assembly with ratchet headband, detachable Vizor covers.

Waistbelt Assembly: An adjustable nylon belt with quick fit buckle. The disposable carbon odour removal filter and pre-set regulator are contained in a moulded housing which is moveable on the belt.

## REPLACEMENT OF PARTS

### DISPOSABLE CARBON FILTER (5):

- 1) Unscrew the three cross head screws holding the regulator (4) to the filter housing (6).
- 2) Remove the spent filter (5) from the filter housing (6) and replace with a complete new moulded filter cartridge (5)
- 3) Replace the regulator housing and retighten the securing screws.
- 4) Connect to the air supply and ensure correct airflow to the mask before use.

### FACEMASK & SEAL ASSEMBLY (2)

Unclip and remove hose and foam diffuser. Push the acetate visor inwards at the top where it attaches to the browguard to

release the two retaining lugs and rotate the visor down. Release the key slot location pegs each side of the visor and remove visor.

To replace, reverse the above procedure ensuring the visor is located in the two browguard retaining lugs and pushed up to the four stops in the browguard.

### VISOR ASSEMBLY (8)

Unscrew the visor supply hose from the top of the regulator, fit QD connector MPV-422 (11) into the thread in the top of regulator, connect replacement supply hose and visor (MPV-517) onto QD connector MPV-422 (11).

## DONNING PRODEDURE

### **WARNING: DO NOT ENTER THE CONTAMINATED AREA UNTIL ITEM (9) IS COMPLETED**

1) Connect the air supply hose to the outlet of a coalescing air filter such as a DVFR 2. Do not turn on the air supply.

**NOTE:** Ensure that the supply hose is of sufficient length to allow the operator to enter and leave the contaminated area without disconnecting or removing the visor. (see installation / operation - hose length)

2) Check the waistbelt and respirator assemblies ensuring that all parts are in good condition. Replace if damaged.

3) Attach and adjust the waistbelt assembly ensuring that the supply air inlet connector is pointing down.

4) Connect the air supply hose to the waistbelt inlet.

5) Connect the respirator feed tube to the outlet socket on top of the filter assembly if fitted.

6) Place the visor assembly on the head and, with the visor in the open position, adjust the tension knobs.

Ensure that the feed tube is not twisted or kinked and will not interfere with normal movements.

7) Turn on the air supply and check that the air is flowing freely to the inside of the visor.

8) Adjust the air pressure to ensure that the minimum supply pressure at the supply hose is 2.5 bar (36 psi).

9) Before entering the contaminated area, the visor must be pulled down, so that the face seal is located under the chin and in contact around its entire periphery, the tension knobs are adjusted so that the visor is locked in this position.

**NOTE:** Do not lift or remove the visor inside the contaminated area. Retreat from the area immediately if any malfunction is suspected or if the warning whistle sounds (if accessory fitted).

## INSTALLATION / OPERATION

**WARNING:** NEVER USE THIS RESPIRATOR IN AN AREA WHERE THE ATMOSPHERE IS IMMEDIATELY HAZARDOUS TO LIFE OR HEALTH. IN AN EMERGENCY THE WEARER MUST BE ABLE TO ESCAPE FROM THE WORK AREA WITHOUT THE NEED OF A RESPIRATOR.

THE AIR SUPPLIED MUST BE OF BREATHABLE QUALITY AND CONFORM TO BSEN 12021:1999 AND THE RELEVANT NATIONAL AND LOCAL STANDARDS.

ONLY USE RECOMMENDED DEVILBISS SUPPLY HOSE

**CAUTION:** It is essential to site the air intake of the compressor so that the air intake is free from contaminants. The compressed air must be regularly checked

for breathable quality.

As a precaution against a supply failure or pressure loss an audible low pressure warning device should be fitted as described under accessories.

**NOTE:** It is recommended that a new air supply hose item (10) fig1 is used and specially identified for breathing air. In the interest of hygiene each user should have their own face mask and hood.

**HOSE LENGTH:** Note 10m is the maximum hose length that can be used due to the minimum pressure requirements.

If longer hose length is required a portable coalescing air filter device must be located at the supply end of the 10m hose and be capable of achieving a pressure of 2.5 Bar (36 lbf/in<sup>2</sup>) at the regulator/filter inlet.

## MAINTENANCE

**INSPECTION:**

1) Replace carbon filter see specification for life or sooner if odours are not effectively removed.

NOTE CARBON FILTER HAS A LIMITED SHELF LIFE.

2) Check security of the hose connections and that hoses and tubes are in good

condition. Replace if damaged.

3) Visually check the condition and function of all components of the vizor particularly the face seals, head harness. Replace if damaged.

4) Check air supply quality on a regular basis see "installation/operation".

## CLEANING

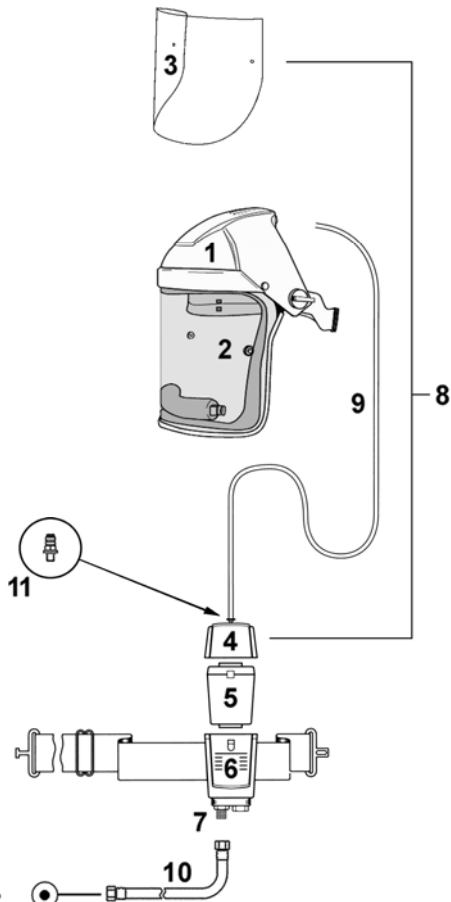
1) Regularly clean and/or disinfect the face mask and headband assemblies. DO NOT USE PAINT SOLVENTS.

Recommended solutions:-

- a) Cleaning: 3ml of liquid detergent to 1 litre of warm water, mix thoroughly.
- b) Disinfectant: 2 ml of Dettol to 1 litre of warm water, mix thoroughly.

Method for cleaning and/or disinfecting

Use a lint free cloth dampened with the solution and wipe outside of the face mask and headband assemblies. Repeat with a clean lint free cloth dampened with clean luke warm water. Allow to dry naturally, maximum ambient temperature 40°C.



**Air supply:**  
 2.5 Min - 7 Max Bar (36 - 100 psi)  
 Breathable quality to BSEN12021:1999  
 (Such as from a DVFR2 Filter/Coalescer  
 unit, see accessories)

\* NOT PART OF KIT ORDER SEPARATELY  
 Use of this Devilbiss supply hose is essential to ensure correct and safe operation of this equipment.

# When replacing these items order MPV-442 (item 11) which is required to fit the replacement items.

NO	DESCRIPTION	PART NO	QTY MPV 628 OUTFIT	NO	DESCRIPTION	PART NO	QTY MPV 628 OUTFIT
1	BROWGUARD ASSEMBLY	MPV-453	1	7	1/4" THREADED CONNECTOR	2101004	1
2	FACEMASK & SEAL ASSEMBLY	MPV-454	1	8	VIZOR ASSEMBLY	# MPV-517	0
3	KIT OF 10 FACE MASK COVERS	MPV-1-K10	1	9	TUBE AND DIFFUSER ASSY	# MPV- 457	1
4	REGULATOR AND HOUSING	MPV-455	1	10	SUPPLY AIR HOSE 5/16" BORE -10M LG 1/4" RE-USABLE FITTINGS	* H-6065-B-R	0
5	DISPOSABLE FILTER	MPV-22	1	11	QUICK DETACH CONNECTOR (F)	MPV-442	0
6	WAISTBELT & FILTER HOUSING	MPV-519	1				

## ACCESSORIES

**MPV-405:** Low pressure Warning device provides an audible whistle to warn the operator when the air pressure is insufficient to supply the minimum recommended air flow.

Permanently fit to the filter/regulator assembly, remove (16), screw whistle device in place then re-fit connection (16) to whistle inlet.

**DVFR-2** Filter regulator coalescer. Suitable for 2 operators, this unit provides air filtered to 99.99% at 0.01 micron.

**DVCF-1** Filter and coalescer. Suitable for 2 operators, this unit provides air filtered to 99.99% at 0.01 micron.

**MPV-24-K5** Kit of 5 Fabric neck covers. (clip to vizor moulding)

**MPV-2-K5** Kit of 5 Elasticated synthetic paper and protective hoods.

**MPV-20** Minature male quick detach stem for vizor air tube.

**MPV-442** Minature female quick detach connector for vizor air tube.

**MPV-458** Stowage Bag.

**ITW Finishing Systems and Products reserve the right to modify equipment specification without prior notice.**

ITW Finishing Systems and Products  
Ringwood Road,  
Bournemouth,  
BH11 9LH,  
England.  
Tel. No. (01202) 571111  
Telefax No. (01202) 581940,  
Website address <http://www.itweuropeanfinishing.com>

ITW Finishing Systems and Products is a Division of ITW Ltd.  
Reg. Office:  
Admiral House,  
St Leonard's Road,  
Windsor,  
Berkshire,  
SL4 3BL,  
UK  
Registered in England: No 559693 Vat No 619 5461 24

October 09